

SBIOA SENIOR SECONDARY SCHOOL, TRICHY – 7.

CLASS : III

EVS - QUESTION BANK

DATE: 18.05.2020

NAME: _____

DAY: THURSDAY

Lesson - 2

PARTS OF A PLANT

I Answer the following:

1. What are the functions of the stem?

Ans: A stem helps the plant to stand upright. It carries water from the roots to the leaves and food from the leaves to all the parts of a plant. The stem stores the extra food in some plants.

2. Why are leaves called “food factories” of a plant? What are the things needed by a plant to prepare food?

Ans: Leaves produce food for the plant, so they are called “food factories” of a plant. Plants need air, water, sunlight and chlorophyll to produce food.

3. Write the function of veins in a leaf.

Ans: The vein has two functions:

(i) They carry water from the stem to the leaf.

(ii) They carry food from the leaf to the stem.

4. What are the different types of root systems? Give two examples of plants that have each of them.

Ans: The two different types of root systems are the tap root system and the fibrous root system. Carrot and bean have tap roots. Wheat and onion have fibrous roots.

5. What are the functions of roots?

Ans: The functions of the roots are

(i) to fix the plant firmly in the soil,

(ii) to protect the plant from falling during heavy winds and rain and

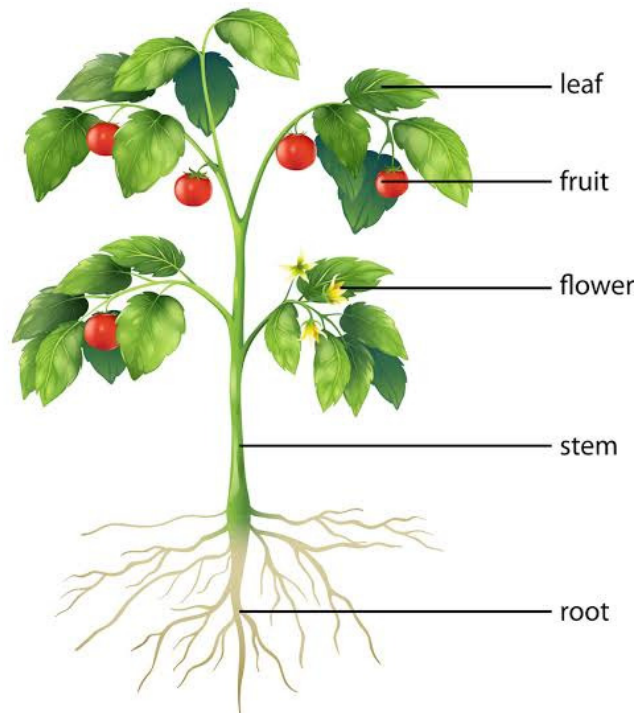
(iii) to absorb water and minerals and carry them to the stem.

6. Why is a seed very important?

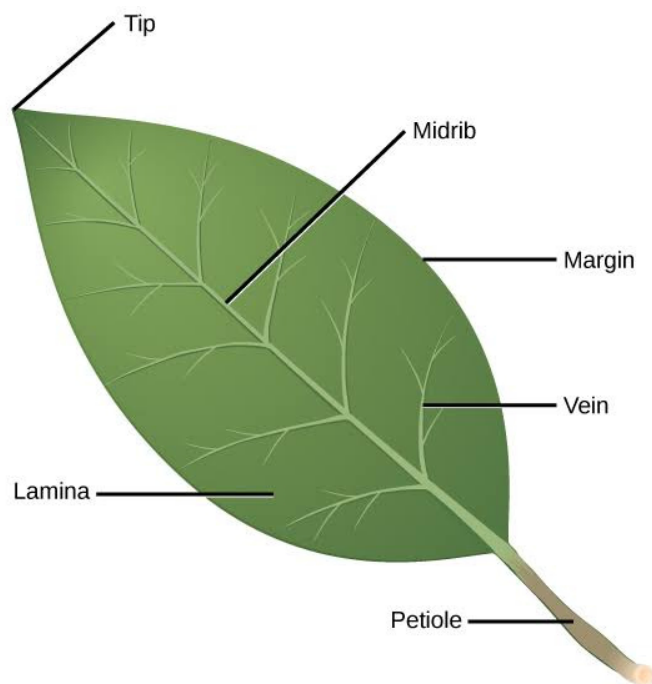
Ans: The seed is very important as it grows into a new plant.

II Draw the following:

1. Parts of a plant

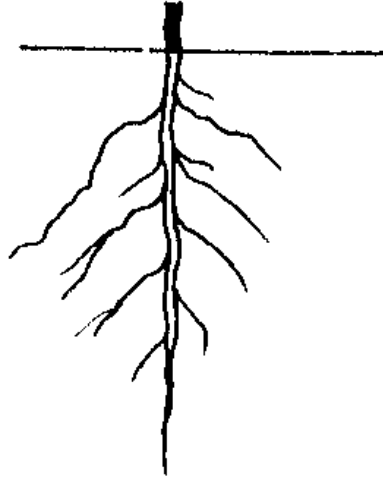


2. Parts of a leaf

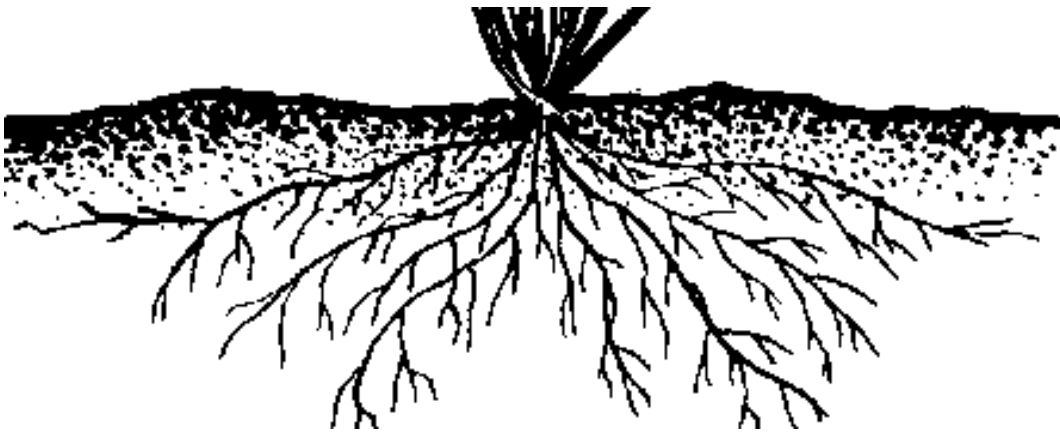


3. Types of Roots:

(a) Tap Root



(b) Fibrous Root



4) Seed



III Additional Questions:

1) What are the parts of a shoot?

Ans: Stem, leaves, flowers, fruits and seeds are the parts of a shoot.

2) When we keep an onion in a glass of water, which type of roots develop?

Ans: Onion develops fibrous roots.

3) If there were no plants on the Earth, we will not have enough oxygen to breathe. Explain why?

Ans: Plants breathe in carbon dioxide and breathe out oxygen, which we need to live.

4) Write one difference between a shoot and a root.

Ans: The shoot of a plant grows above the ground.

The root of a plant grows below the ground.

5) Write one difference between fibrous root and tap roots.

Ans: Tap roots have one main root and several thin roots that grow from the main root.

Fibrous roots do not have a main root, but have several roots growing from the stem.

IV Who am I?

1. I am a colourful part of the plant and later turn into fruit. I am:

A flower

2. I am the highway of the plant and transport food and water to all the parts of the plant. I am:

A stem

3. I am a flat and green part of the plant that cooks food for the whole plant. I am:

A leaf